

See Sheets 2 and 4 for Details



See Sheets 3 and 4 for Details

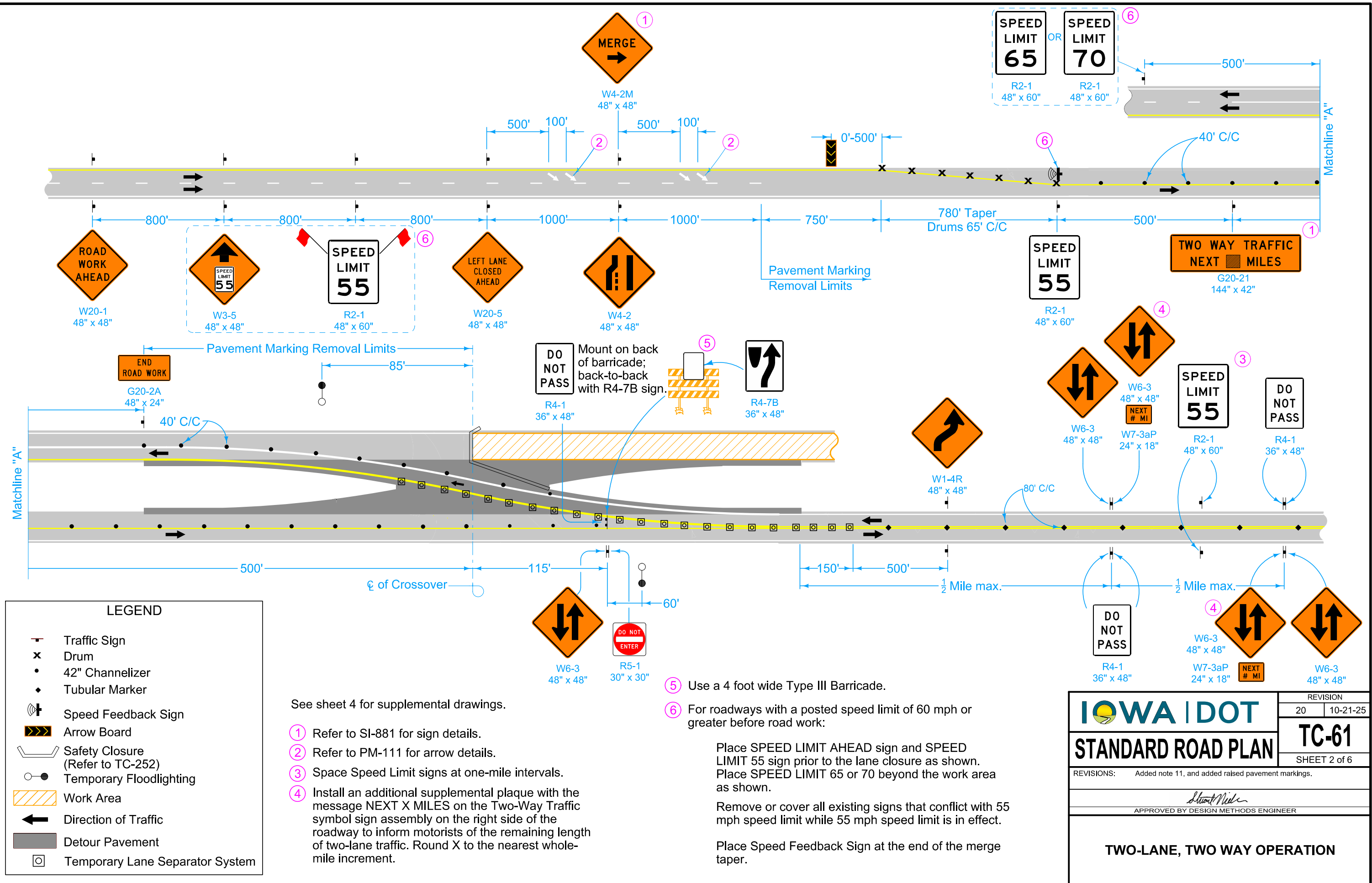
OVERVIEW OF CROSSOVER

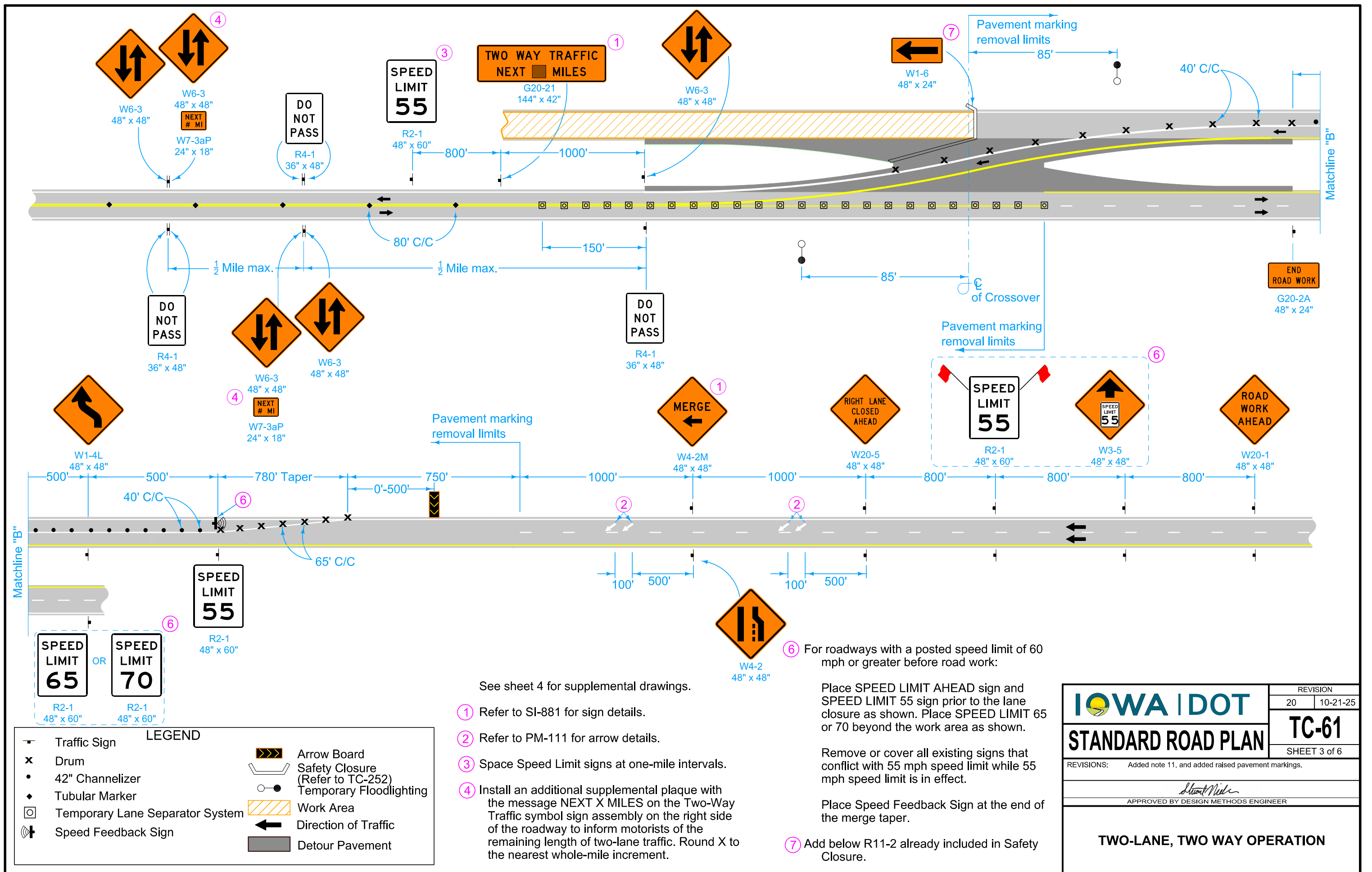
Place Two-Way Traffic symbol and DO NOT PASS signs alternately on both sides of the roadway at a maximum of one-half mile intervals for both directions of travel. Always have signs in sight of motorists.



- Possible Contract Items:
- Painted Symbols and Legends
 - Pavement Marking Items
 - Pavement Marking Removed
 - Safety Closures
 - Temporary Floodlighting
 - Temporary Lane Separator System
 - Traffic Control

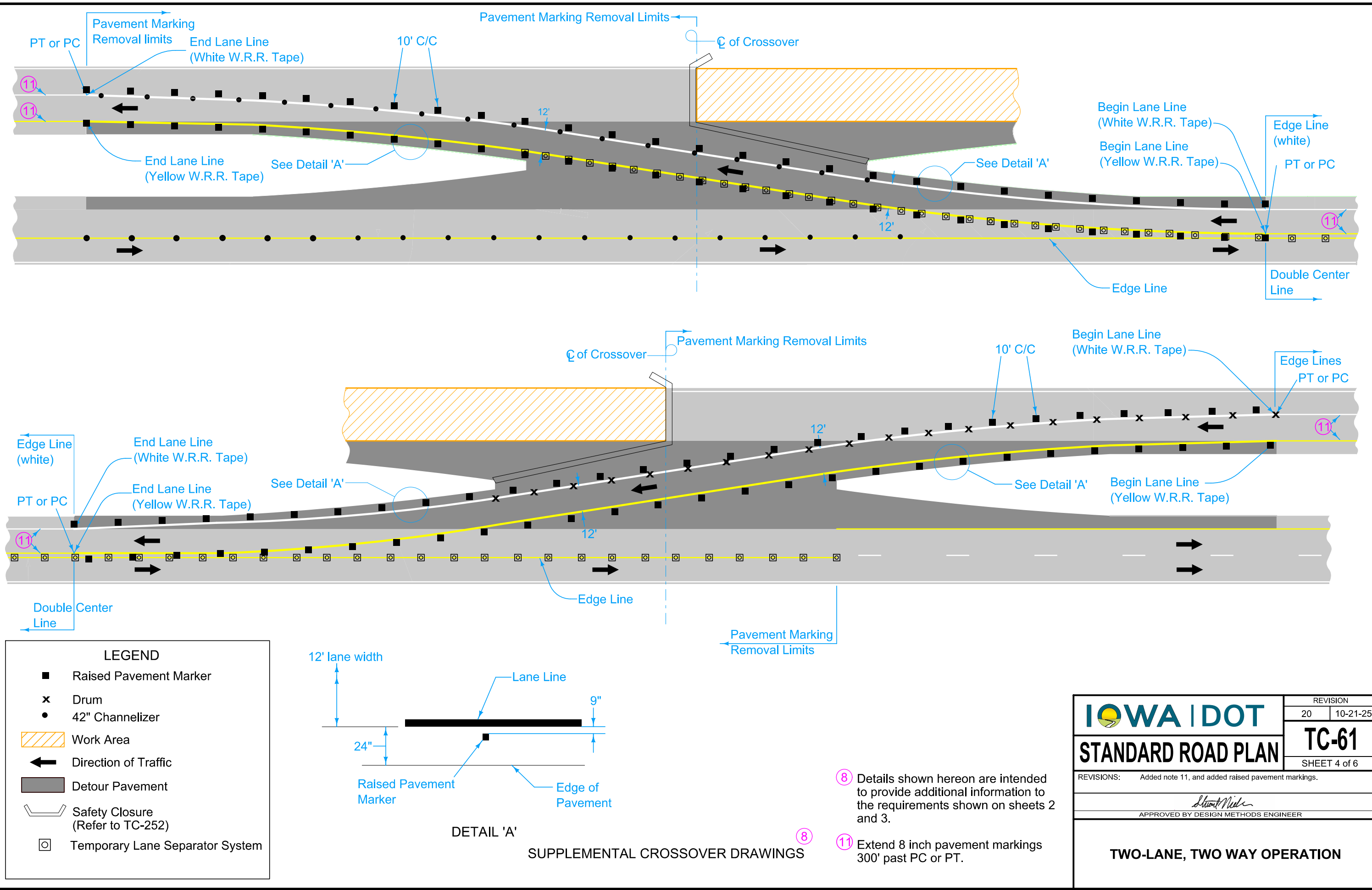
- Possible Tabulations:
- 108-13A, 108-22, 108-27, 108-29, 108-30, 108-33, 108-35

 STANDARD ROAD PLAN	REVISION	
	20	10-21-25
	TC-61	
SHEET 1 of 6		
REVISIONS: Added note 11, and added raised pavement markings.		
 APPROVED BY DESIGN METHODS ENGINEER		
TWO-LANE, TWO WAY OPERATION		



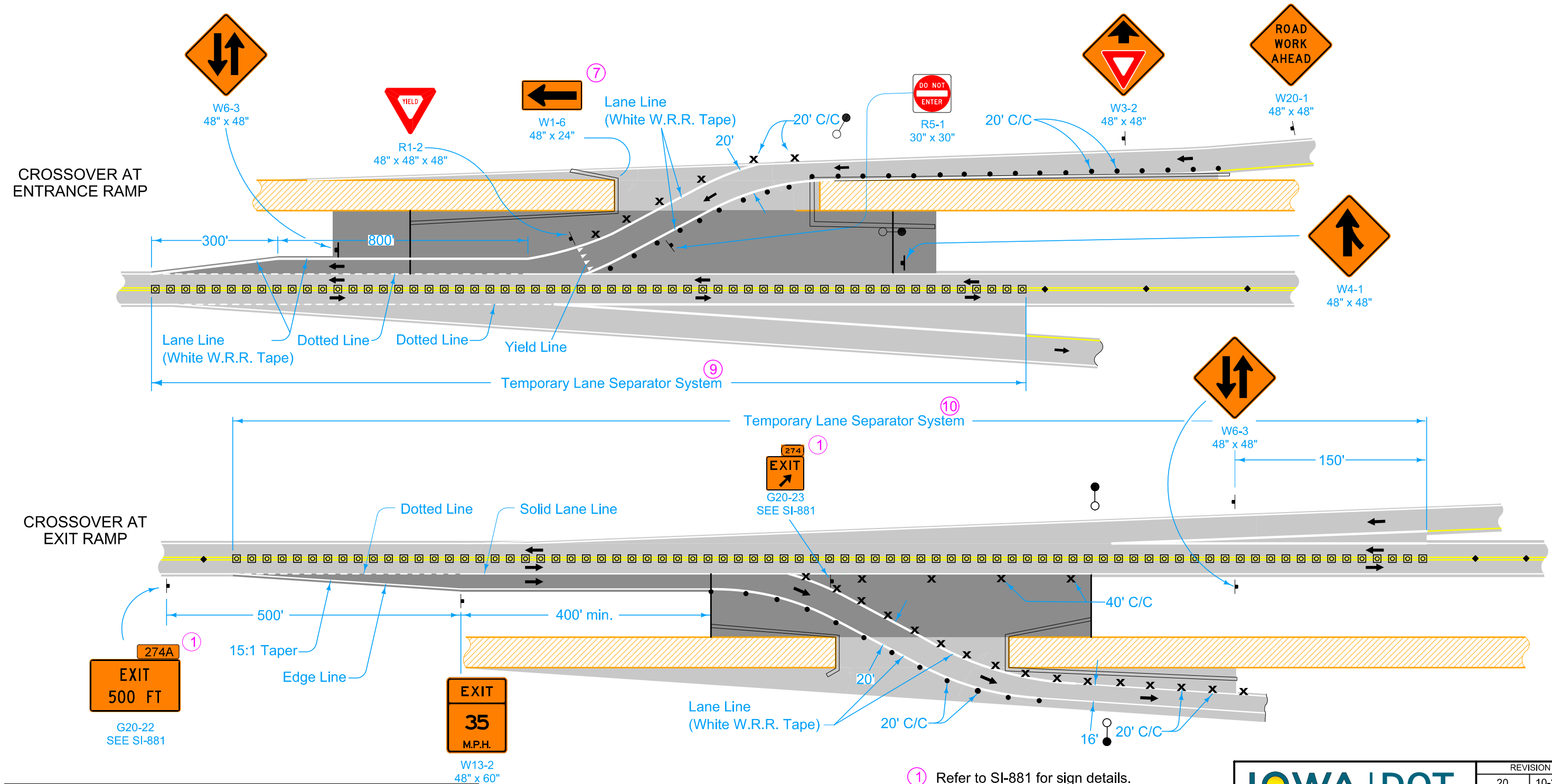


 IOWA DOT	REVISION	
	20	10-21-25
	TC-61	
STANDARD ROAD PLAN	SHEET 3 of 6	
REVISIONS: Added note 11, and added raised pavement markings.		
		
APPROVED BY DESIGN METHODS ENGINEER		
TWO-LANE, TWO WAY OPERATION		

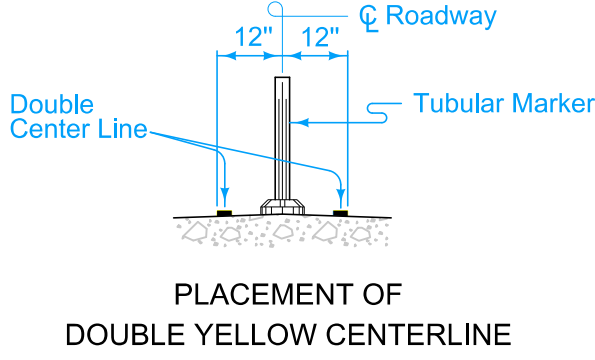


IOWA DOT STANDARD ROAD PLAN	REVISION	
	20	10-21-25
	TC-61	
SHEET 4 of 6		
REVISIONS: Added note 11, and added raised pavement markings.		
APPROVED BY DESIGN METHODS ENGINEER		
TWO-LANE, TWO WAY OPERATION		


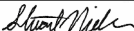
RAMP LOCATIONS

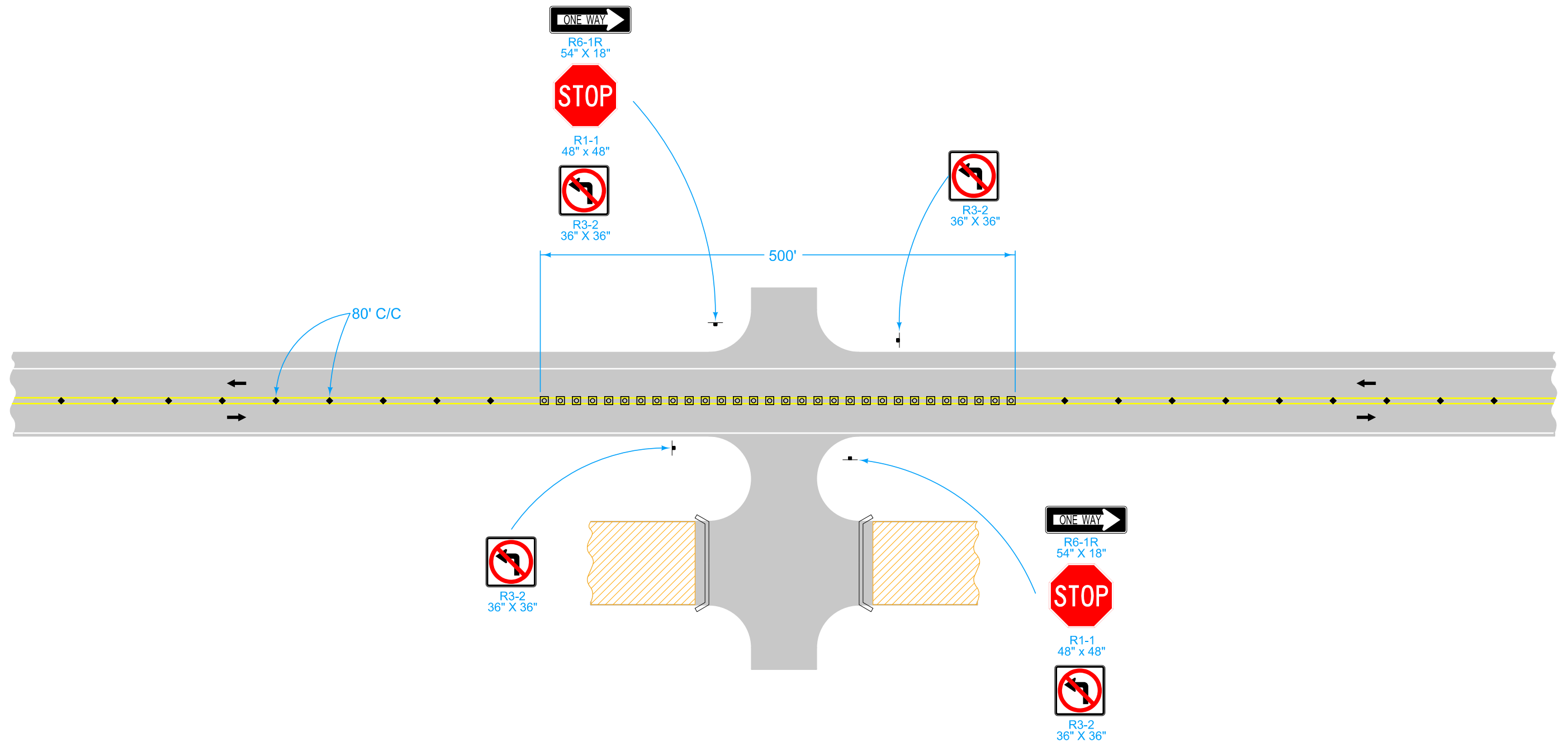


LEGEND	
	Traffic Sign
	42" Channelizer
	Drum
	Tubular Marker
	Temporary Floodlighting
	Temporary Lane Separator System
	Work Area
	Detour Pavement
	Direction of Traffic
	Safety Closure (Refer to TC-252)





- 1 Refer to SI-881 for sign details.
- 7 Add below R11-2 already included in Safety Closure.
- 9 Place TLSS from start of ramp gore to end of temporary ramp crossover.
- 10 Place TLSS from start of full width decel lane to end of ramp gore.

 IOWA DOT		REVISION	
STANDARD ROAD PLAN		20	10-21-25
		TC-61	
		SHEET 5 of 6	
REVISIONS: Added note 11, and added raised pavement markings.			
			
APPROVED BY DESIGN METHODS ENGINEER			
TWO-LANE, TWO WAY OPERATION			



Traffic Control for At-Grade Intersections
(Right-In, Right-Out)

LEGEND	
	Traffic Sign
	Tubular Marker
	Direction of Traffic
	Temporary Lane Separator System
	Work Area
	Safety Closure (Refer to TC-252)

 IOWA DOT	REVISION	
	20	10-21-25
	TC-61	
	SHEET 6 of 6	
REVISIONS: Added note 11, and added raised pavement markings.		
		
APPROVED BY DESIGN METHODS ENGINEER		
TWO-LANE, TWO WAY OPERATION		